

Additional mast lift

Manoeuvrable and compact

ProTracLink



EJE C20

Electric pedestrian pallet truck (2,000 kg)

The EJE C20 combines an extremely short front-end length with integrated mast lift to offer a wide range of flexible application options. From light stacking to extensive order picking tasks, the EJE C20 is ideal for many applications. In addition to the support arm lift, the load can be raised to 752 mm with a mast integrated into the battery compartment. This makes it possible to move goods to a height that reduces back strain.

The very narrow front-end dimension of 584 mm makes the EJE C20 ideal for use in shops, in very tight storage areas or on an HGV. Light stacking operations, such as stacking half Euro pallets, can be easily undertaken with separate support arm lift and mast lift (optional). The support arm lift capacity is 2000 kg while the mast lift capacity is 700 kg.

Safe operation facilitated by the low-mounted, long tiller. It

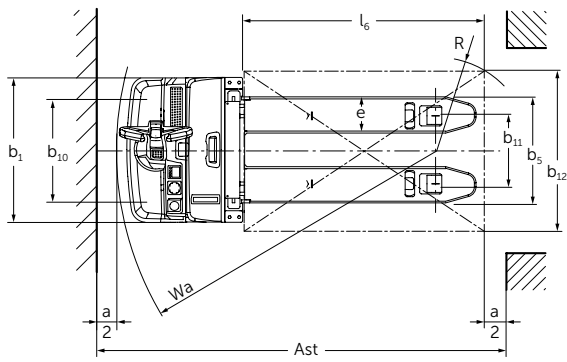
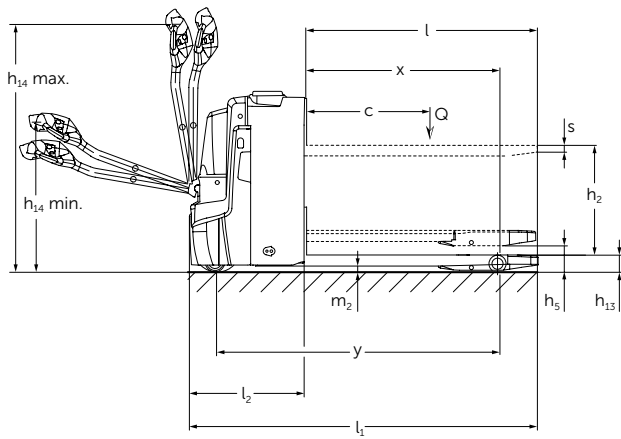
provides the necessary distance between operator and truck. This is particularly beneficial when cornering. The optional foot protection tiller ensures safe operation in confined spaces. The crawl speed button also facilitates safe travel with the tiller in the upright position. At the touch of a button, the brake is released and activation of the travel switch automatically reduces the speed of travel significantly.

The optional silentDRIVE noise-reducing version allows for operation in noise-sensitive environments.

The multi-functional tiller arm is full of innovations: Sealed sensor system (IP 65) for maximum breakdown protection, rocker switches with contactless electronics for precise operation in any tiller position, ergonomically arranged switches.



EJE C20



Technical data in line with VDI 2198

Identification	1.1	Manufacturer (abbreviation)		Jungheinrich
	1.2	Manufacturer's type designation		EJE C20
	1.3	Drive		Electric
	1.4	Operator type: manual, pedestrian, stand-on, seated, order picker		pedestrian
	1.5	Load capacity/rated load	Q t	2
	1.5.1	Load capacity/load with mast lift	Q t	0.7
	1.5.2	Load capacity/load with support arm lift	Q t	2
	1.6	Load centre distance	c mm	600
	1.8	Load distance, centre of drive axle to fork	x mm	893 ³⁾
1.9	Wheelbase	y mm	1,333 ³⁾	
Weights	2.1.1	Service weight incl. battery (see row 6.5)	kg	523
	2.2	Axle loading, laden front/rear	kg	800 / 1,729
	2.3	Axle loading, unladen front/rear	kg	390 / 133
Wheels / frame	3.1	Tyres		PU/PU
	3.2	Tyre size, front	mm	Ø 230 x 70
	3.3	Tyre size, rear	mm	Ø 85 x 95
	3.4	Additional wheels (dimensions)	mm	Ø 100 x 40
	3.5	Wheels, number front/rear (x = driven wheels)		1x +2/2 or 4
	3.6	Tread width, front	b ₁₀ mm	510
	3.7	Tread width, rear	b ₁₁ mm	338
Basic dimensions	4.4	Lift	h ₃ mm	540
	4.6	Initial lift	h ₅ mm	122
	4.9	Height of tiller in drive position min. / max.	h ₁₄ mm	750 / 1,237
	4.15	Height, lowered	h ₁₃ mm	90
	4.19	Overall length	l ₁ mm	1,734
	4.20	Length to face of forks	l ₂ mm	584
	4.21	Overall width	b ₁ /b ₂ mm	720
	4.22	Fork dimensions	s/e/l mm	60 / 180 / 1,150
	4.25	Width across forks	b ₅ mm	530
	4.32	Ground clearance, centre of wheelbase	m ₂ mm	30
	4.33	Aisle width for pallets 1000 × 1200 crossways	Ast mm	2,322 ²⁾
4.34	Aisle width for pallets 800 × 1200 lengthways	Ast mm	2,217 ¹⁾	
4.35	Turning radius	W _a mm	1,513 ³⁾	
Performance data	5.1	Travel speed, laden/unladen	km/h	6 / 6
	5.2	Lift speed, laden/unladen	m/s	0 / 0
	5.3	Lowering speed, laden/unladen	m/s	0 / 0
	5.8	Max. gradeability, laden/unladen	%	8 / 20
	5.10	Service brake		electric
Electrics	6.1	Drive motor, output S2 60 min.	kW	1.1
	6.2	Lift motor, output at S3 10%	kW	1.2
	6.3	Battery as per DIN 43531/35/36 A, B, C, no		nein/B
	6.4	Battery voltage/nominal capacity K5	V/Ah	24 / 150
	6.5	Battery weight	kg	151
	6.6	Energy consumption as per EN 16796	kWh/h	0.31
		CO- Equivalent as per EN 16796	kg/h	0.2
	6.7	Throughput	t/h	100
6.8	Energy consumption at max. throughput	kWh/h	0.63	
Misc.	8.1	Type of drive control		AC speedCONTROL
	8.4	Sound pressure level at driver's ear as per EN 12053	dB (A)	61

¹⁾ Load section lowered: + 24 mm

²⁾ Load section lowered: + 49 mm

³⁾ Load section lowered: + 56 mm

Benefit from the advantages



Ergonomic tiller arm



Built-in charger (optional)



Triple load rollers



Ergonomic working height

Flexible application

The compact design together with the support arm lift and mast lift and the permanently connected ProTracLink caster wheels make the EJE C20 a versatile truck for universal use:

- Ideal in pallet truck applications over short transport distances with loads up to 2000 kg.
- Efficient usage with ergonomic mast lift up to an order-picking height of 752 mm and a load of up to 700 kg.
- Unobtrusive and reliable handling in shops with public traffic, thanks to very short front-end length and narrow aisle width.
- An optimised battery lid design ensures a clear view of the load.
- With its very low service weight, the EJE C20 is also perfect for use in delivery vans, on mezzanines or in lifts.
- Built-in charger (optional) for straight-forward charging at any mains socket – also available with quick charge function for charging during a shift.

Fully informed at all times

Optional 2-inch display as the main display and setting instrument offers user control at a glance:

- Battery discharge status, number of operating hours, error codes and a selection of 3 travel programs.

- Activation of the truck by key or by softkey, PIN code or transponder card (optional).

Work ergonomically

The tiller arm is perfectly adapted to the ergonomic needs of the operator:

- A clear colour coding system and buttons with abrasion resistant symbols for intuitive operation.
- Crawl speed button on the underside of the tiller arm for quick access and easy operation with the tiller in the vertical position.
- Non-contact sensor system with IP 65 protection, hence lowest risk of breakdown.
- Rocker switch for consistently good operation in all tiller positions.
- 4-stage speed tiller for optimum foot protection.

Lower maintenance costs

3-phase AC technology ensures significant and long-term reduction in operating costs:

- Maintenance-free 3-phase AC drive motor with no carbon brushes.
- Easy access to all components through one-piece front cover secured by only 2 screws.

- Excellent protection against dust and humidity through enclosure of controller and plugs in accordance with IP 54.
- Patented ProTracLink: Automatic level equalisation ensures reduced caster wheel wear when approaching ramps at an angle.

Additional equipment

- Load guard.
- Cold store version.
- silentDRIVE for quiet operation.
- Automatic height positioning (keeps top level of load, i.e. when unloading cartons) for ergonomic work.
- Side touch operation for perfect order picking.

Lithium-ion technology

- High degree of availability thanks to extremely short charging times.
- No battery exchange required.
- Cost savings due to longer service life and low maintenance compared with lead-acid batteries.
- No charging rooms and ventilation required as there is no build up of gas.
- Longer service life with 5-year Jungheinrich guarantee.

Jungheinrich UK Ltd.

Head Office:
 Sherbourne House
 Sherbourne Drive
 Tilbrook
 Milton Keynes MK7 8HX
 Telephone 01908 363100
 Fax 01908 363180

info@jungheinrich.co.uk
 www.jungheinrich.co.uk

The German production facilities in Norderstedt, Moosburg and Landsberg are certified. **ISO 9001**
ISO 14001

Jungheinrich fork lift trucks meet European safety requirements.



JUNGHEINRICH