

Innovative lithium-ion technology

Manoeuvrable and compact

Low overall weight

Intuitive battery handling

High level of operational readiness



EJE 112i/114i

Electric pedestrian pallet truck (1,200/1,400 kg)

The EJE 112i / 114i electric pedestrian pallet trucks combine the robustness and cost-effectiveness of the EJE series with the advantages of lithium-ion technology. This makes them ideal for conventional applications and use on HGVs.

Particularly convincing are the design of the battery and the considerably reduced size of the battery compartment. This enables a minimum front end (l2) of only 425 mm to be achieved. The overall weight of the truck, including the battery, reduces to just 315 kg (with a load capacity of 1200 kg or 1400 kg), making it much easier to use in the most confined spaces and in weight-sensitive areas – such as on an HGV tailgate. This is made possible through the use of the very latest lithium-ion technology.

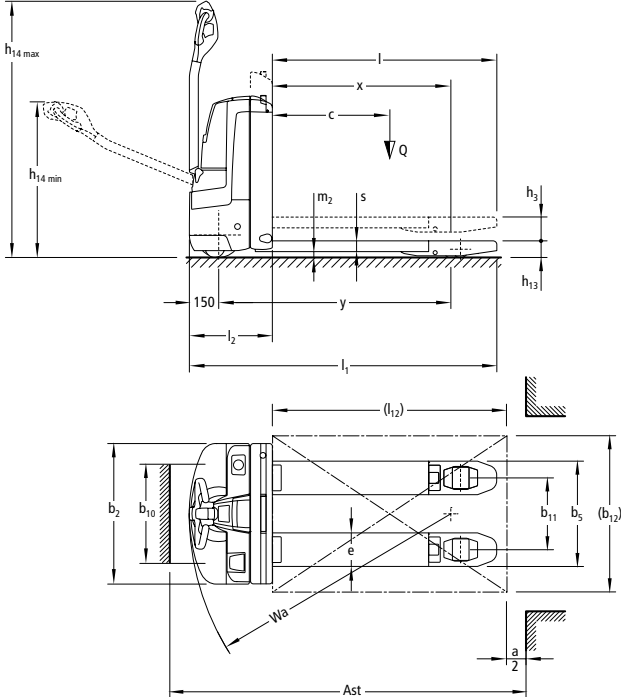
The battery handling of the EJE 112i is simple and intuitive. It is particularly easy to exchange the 14 kg battery comparable in size and shape to a briefcase. The battery is easily removed laterally from the truck. It enables flexible usage even in multi-shift operation due to its rapid charge and boost charging features.

The EJE 114i is equipped with a battery permanently built into the truck. In conjunction with a built-in charger, the truck can be charged at any standard 230 V mains socket. The maintenance-free battery ensures maximum availability. The integrated battery management system monitors interaction between the individual battery cells and ensures safe and reliable operation.

Both the EJE 112i and the EJE 114i are based on proven, long-life components in our EJE series 116-120.

 **JUNGHEINRICH**

EJE 112i/114i



Technical data in line with VDI 2198

				Jungheinrich		
				EJE 112i	EJE 114i	
				Lateral battery exchange	integrated battery	
Identification	1.1	Manufacturer (abbreviation)				
	1.2	Model				
	1.3	Drive		Electric		
	1.4	Manual, pedestrian, stand-on, seated, order picker operation		pedestrian		
	1.5	Load capacity/rated load	Q	t	1.2	1.4
	1.6	Load centre distance	c	mm	600	
	1.8	Load distance	x	mm	911	
	1.9	Wheelbase	y	mm	1,186	
	Weights	2.1.1	Net weight incl. battery (see row 6.5)		315	
2.2		Axle loading, laden front/rear		557 / 958	625 / 1,090	
2.3		Axle loading, unladen front/rear		246 / 69		
Wheels / frame	3.1	Tyres		PU / PU		
	3.2	Tyre size, front		Ø 230 x 70		
	3.3	Tyre size, rear		Ø 85 x 110 / 85 x 85		
	3.4	Additional wheels (dimensions)		Ø 100 x 40		
	3.5	Wheels, number front/rear (x = driven wheels)		1x 2/2		
	3.6	Tread width, front	b ₁₀	mm	508	
	3.7	Tread width, rear	b ₁₁	mm	368	
Basic dimensions	4.4	Lift		h ₃ mm 122		
	4.9	Height of tiller in drive position min. / max.		h ₁₄ mm 797 / 1,313		
	4.15	Height, lowered		h ₁₃ mm 85		
	4.19	Overall length		l ₁ mm 1,575		
	4.20	Length to face of forks		l ₂ mm 425		
	4.21	Overall width		b ₁ /b ₂ mm 720 / 720		
	4.22	Fork dimensions		s/e/l mm 55 / 172 / 1,150		
	4.25	Width across forks		b ₅ mm 540		
	4.32	Ground clearance, centre of wheelbase		m ₂ mm 30		
	4.33	Aisle width for pallets 1000 x 1200 crossways		Ast mm 1,762		
4.34	Aisle width for pallets 800 x 1200 lengthways		Ast mm 1,855			
4.35	Turning radius		W _a mm 1,370			
Performance data	5.1	Travel speed, laden/unladen		km/h 6 / 6		
	5.2	Lift speed, laden/unladen		m/s 0.04 / 0.05		
	5.3	Lowering speed, laden/unladen		m/s 0.05 / 0.05		
	5.7	Gradeability, laden/unladen		% 10 / 20		
Electrics	6.1	Drive motor, output S2 60 min.		kW 1.0		
	6.2	Lift motor, output at S3 10%		kW 1.2		
	6.3	Battery as per DIN 43531/35/36 A, B, C, no		no		
	6.4	Battery voltage/nominal capacity K5		V/Ah 24 / 40		
	6.5	Battery weight		kg 14		
Misc.	8.1	Type of drive control		AC speedCONTROL		
	8.4	Sound pressure level at operator's ear as per EN 12053		dB (A) 70		

Benefit from the advantages



Lateral battery exchange on the EJE 112i



Built-in charger



EJE 114i with integrated battery



Battery case 40 Ah

Small, compact truck

Optimum operation in confined areas due to extremely short front end dimension. The EJE 112i/114i variants are very compact and easy to steer even in confined areas:

- The length including forks (L2 dimension) is only 425 mm.
- Manoeuvring with the tiller upright is easy at reduced speed.
- Overall weight including battery only 315 kg.

Professional battery management

The EJE with lithium-ion technology is available with 2 different charging concepts:

With the EJE 112i, the lateral battery exchange is easy and comfortable with the battery in the shape of a case with integrated carrying handles:

- The battery is simply inserted into the appropriate drawer in the truck.
- Battery drawer opens at the touch of a button.
- Convenient battery exchange with light battery weighing just approx. 14 kg.
- Battery exchange compartment built into the charger.

With the EJE 114i, the battery is already an integral part of the truck. The built-

in charger enables the battery to be charged in a very short time at any 230-V socket. The boost charging feature of the lithium-ion battery enables the battery to be charged even during short breaks. This makes a battery exchange unnecessary.

Maintenance-free battery

The lithium-ion battery is maintenance-free. This eliminates personnel costs for maintenance, as well as the cost of an expensive charging infrastructure (e.g. charging rooms, ventilation).

Work ergonomically

Tiller arm optimally adapted to the ergonomic needs of the operator:

- Clear colour coding and buttons with wear-resistant icons ensure intuitive operation.
- Grip position optimally adapted to the operator's hand posture.
- Easy accessibility of the crawl speed button when travelling with vertical tiller.
- Contactless sensor system with IP 65 protection rating. High protection against breakdown.
- Rocker switch for consistent operation in all tiller positions.

Proven truck technology

3-phase AC technology ensures a significant long-term reduction in operating costs:

- Maintenance-free 3-phase AC drive motor without carbon brushes.
- Easy access to all components through one-piece front cover secured by only two screws.
- Excellent protection against dust and humidity through IP 54 enclosure of controller and plugs.
- ProTraLink: Reduced support wheel wear when approaching ramps at an angle thanks to level equalisation. A mechanical link keeps both support wheels at the same height, ensuring no impact from the lower support wheel and therefore reducing damage.

Lithium-ion technology

- High degree of availability thanks to extremely short charging times.
- No battery exchange required.
- Cost savings due to longer service life and low maintenance compared with lead-acid batteries.
- No charging rooms and ventilation required as there is no build up of gas.
- Longer service life with 5-year Jungheinrich guarantee.

Jungheinrich UK Ltd.

Head Office:
Sherbourne House
Sherbourne Drive
Tilbrook
Milton Keynes MK7 8HX
Telephone 01908 363100
Fax 01908 363180

info@jungheinrich.co.uk
www.jungheinrich.co.uk

The German production facilities in Norderstedt, Moosburg and Landsberg are certified. **ISO 9001**
ISO 14001

Jungheinrich fork lift trucks meet European safety requirements.



JUNGHEINRICH