

Lift heights up to 6 m
High residual capacities
Sensitive lifting and lowering
Electric tiller steering
High ground clearance

LION
technology



EJC 212z/214z/216z/220z

Electric pedestrian controlled truck with support arm lift (1,200/1,400/1,600/2,000 kg)

The EJC 212z/214z/216z/220z pedestrian stackers are experts at the stacking and removal of goods. Designed for high performance at lift heights of up to 6000 mm (EJC 214z/216z), high residual capacities and long uptimes, it achieves maximum throughput. The electronically controlled, powerful lift motor ensures smooth and quiet lifting or lowering of the load at the touch of a button: From smooth depositing, rapid lifting and lowering or precisely approaching the racking – the operator has everything under control at all times.

The powerful 24-V 3-phase AC drive motor with its optimised efficiency achieves high speeds and excellent acceleration in any situation. liftPLUS (optional) enables the EJC 214z/216z to achieve a significantly higher lift speed when lifting the forks (up to 400 kg) in comparison with the production version.

The unique feature of this truck is its support arm lift: The ad-

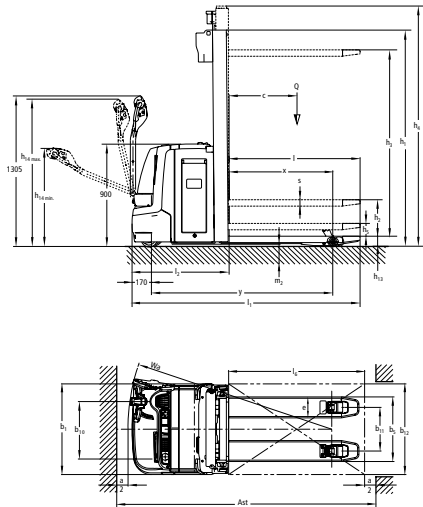
ditional ground clearance enables the operator to effortlessly overcome uneven floors, ramps, crossing plates or loading bridges. The capacity in low lift operation is 2.0 t.

2 pallets can also be transported simultaneously, doubling the speed of operation compared to single pallet transportation (optional). High residual capacities are ensured by the robust and rigid frame made of 8-mm thick steel, the stable 4-point suspension and the torsion-resistant mast.

Electric tiller steering (optional) provides low steering forces for fatigue-free steering, especially when driving with the tiller vertical using the crawl speed button. A built-in charger (optional) allows the integrated battery to be reliably charged at any mains socket. This charger is also optionally available with a rapid charging function. Rapid lateral battery exchange enables the truck to be used in multi-shift operations.

JUNGHEINRICH

EJC 212z/214z/216z/220z



Standard mast designs EJC 212z/214z/216z/220z

	Lift h_3 (mm)	Lowered mast height ¹⁾ h_1 (mm)				Free lift h_2 (mm)				Extended mast height h_4 (mm)			
		EJC 212z	EJC 214z	EJC 216z	EJC 220z	EJC 212z	EJC 214z	EJC 216z	EJC 220z	EJC 212z	EJC 214z	EJC 216z	EJC 220z
		Duplex ZT	2400	-	-	1750	-	-	-	100	-	-	-
	2500	1750	1750	-	1950	100	100	-	100	2975	2975	-	3165
	2600	-	-	1850	-	-	-	100	-	-	-	3125	-
	2700	1850	1850	-	-	100	100	-	-	3175	3175	-	-
	2800	-	-	1950	2100	-	-	100	100	-	-	3325	3465
	2900	1950	1950	-	-	100	100	-	-	3375	3375	-	-
	3100	-	-	2100	-	-	-	100	-	-	-	3625	-
	3200	2100	2100	-	-	100	100	-	-	3675	3675	-	-
	3500	-	-	2300	2450	-	-	100	100	-	-	4025	4165
	3600	2300	2300	-	-	100	100	-	-	4075	4075	-	-
	3800	-	-	2450	-	-	-	100	-	-	-	4325	-
	4000	-	-	2550	-	-	-	100	-	-	-	4525	-
	4100	2550	2550	-	-	100	100	-	-	4575	4575	-	-
	4200	-	-	2650	-	-	-	100	-	-	-	4725	-
	4300	2650	2650	-	-	100	100	-	-	4775	4775	-	-
	4400	-	-	2750	-	-	-	100	-	-	-	4925	-
	4500	-	2750	-	-	-	100	-	-	-	4975	-	-
Duplex ZZ	2400	-	-	1700	-	-	-	1175	-	-	-	2925	-
	2500	1700	1700	-	1900	1225	1225	-	1235	2975	2975	-	3165
	2800	-	-	1900	2050	-	-	1375	1385	-	-	3325	3465
	2900	1900	1900	-	-	1425	1425	-	-	3375	3375	-	-
	3100	-	-	2050	-	-	-	1525	-	-	-	3625	-
	3200	2050	2050	-	-	1575	1575	-	-	3675	3675	-	-
	3500	-	-	2250	2400	-	-	1725	1735	-	-	4025	4165
	3600	2250	2250	-	-	1775	1775	-	-	4075	4075	-	-
	4000	-	-	2500	-	-	-	1975	-	-	-	4525	-
	4100	2500	2500	-	-	2025	2025	-	-	4575	4575	-	-
	4200	-	-	2600	-	-	-	2075	-	-	-	4725	-
	4300	2600	2600	-	-	2125	2125	-	-	4775	4775	-	-
Triplex DZ	3510	-	-	-	1850	-	-	-	1150	-	-	-	4210
	3990	-	-	1830	-	-	-	1298	-	-	-	4522	-
	4090	-	1830	-	-	-	1341	-	-	-	4579	-	-
	4200	-	-	1900	2080	-	-	1368	1380	-	-	4732	4900
	4300	1915	1900	-	-	1408	1411	-	-	4807	4789	-	-
	4590	-	-	2030	-	-	-	1498	-	-	-	5122	-
	4690	-	2030	-	-	-	1541	-	-	-	5179	-	-
	4700	2050	-	-	-	1543	-	-	-	5212	-	-	-
	4800	-	-	-	2280	-	-	-	1580	-	-	-	5500
	5250	-	-	2250	-	-	-	1718	-	-	-	5782	-
	5350	-	2250	-	-	-	1761	-	-	-	5839	-	-
	6000	-	2500	2500	-	-	1968	1968	-	-	6532	6532	-

¹⁾ EJC 212z/214z/216z: with 100 mm free lift

Technical data in line with VDI 2198

		Jungheinrich							
				EJC 212z ⁵⁾	EJC 214z ⁵⁾	EJC 216z ⁵⁾	EJC 220z		
Identification	1.1	Manufacturer (abbreviation)							
	1.2	Model							
	1.3	Drive		Electric					
	1.4	Manual, pedestrian, stand-on, seated, order picker operation		pedestrian					
	1.5	Load capacity/rated load	Q	t	1.2	1.4	1.6	2	
	1.5.1	Load capacity/load with mast lift	Q	t	1.2	1.4	1.6	2	
	1.5.2	Load capacity/load with support arm lift	Q	t	2				
	1.6	Load centre distance	c	mm	600				
	1.8	Load distance	x	mm	910 ³⁾⁶⁾				
1.9	Wheelbase	y	mm	1,571 ³⁾	1,592 ³⁾	1,592 ³⁾	1,592 ³⁾		
Weights	2.1.1	Net weight incl. battery (see row 6.5)		kg	1,180	1,240	1,260	1,293	
	2.2	Axle loading, laden front/rear		kg	1,105 / 1,275	1,180 / 1,460	1,250 / 1,610	1,250 / 2,049	
	2.3	Axle loading, unladen front/rear		kg	840 / 340	880 / 360	900 / 360	917 / 374	
Wheels / frame	3.1	Tyres		PU					
	3.2	Tyre size, front		Ø 230 x 70					
	3.3	Tyre size, rear		Ø 85 x 95 / 75	Ø 85 x 95 / 75	Ø 85 x 95 / 75	Ø 85 x 75		
	3.4	Additional wheels (dimensions)		Ø 140 x 54					
	3.5	Wheels, number front/rear (x = driven wheels)		1x +1/2 or 4	1x +1/2 or 4	1x +1/2 or 4	1x +1/4		
	3.6	Tread width, front	b ₁₀	mm	507				
	3.7	Tread width, rear	b ₁₁	mm	385				
Basic dimensions	4.2	Mast height (lowered)		h ₁	mm	1,950	1,950	1,950	2,100
	4.3	Free lift		h ₂	mm	100			
	4.4	Lift		h ₃	mm	2,900	2,900	2,800	2,800
	4.5	Extended mast height		h ₄	mm	3,375	3,375	3,325	3,465
	4.6	Initial lift		h ₅	mm	122			
	4.9	Height of tiller in drive position min. / max.		h ₁₄	mm	850 / 1,305	850 / 1,305	850 / 1,295	850 / 1,295
	4.15	Height, lowered		h ₁₃	mm	90			
	4.19	Overall length		l ₁	mm	1,981 ⁶⁾	2,002 ⁶⁾	2,002 ⁶⁾	2,002 ⁶⁾
	4.20	Length to face of forks		l ₂	mm	831 ⁶⁾	852 ⁶⁾	852 ⁶⁾	852 ⁶⁾
	4.21	Overall width		b ₁ /b ₂	mm	800			
	4.22	Fork dimensions		s/e/l	mm	56 / 185 / 1,150	56 / 185 / 1,150	56 / 185 / 1,150	61 / 195 / 1,150
	4.25	Width across forks		b ₅	mm	570			
	4.32	Ground clearance, centre of wheelbase		m ₂	mm	20			
	4.33	Aisle width for pallets 1000 x 1200 crossways		Ast	mm	2,217 ²⁾	2,238 ²⁾	2,238 ²⁾	2,238 ²⁾
4.34	Aisle width for pallets 800 x 1200 lengthways		Ast	mm	2,267 ¹⁾	2,288 ¹⁾	2,288 ¹⁾	2,288 ¹⁾	
4.35	Turning radius		W _a	mm	1,777 ³⁾⁴⁾	1,798 ³⁾⁴⁾	1,798 ³⁾⁴⁾	1,798 ³⁾⁴⁾	
Performance data	5.1	Travel speed, laden/unladen		km/h	6 / 6				
	5.2	Lift speed, laden/unladen		m/s	0.13 / 0.22	0.16 / 0.25	0.15 / 0.25	0.1 / 0.18	
	5.3	Lowering speed, laden/unladen		m/s	0.43 / 0.37	0.37 / 0.34	0.37 / 0.34	0.37 / 0.34	
	5.8	Max. gradeability, laden/unladen		%	8 / 16	8 / 16	7 / 16	5 / 16	
	5.10	Service brake		regenerative					
Electrics	6.1	Drive motor, output S2 60 min.		kW	1.6				
	6.2	Lift motor kW rating at S3 7%		kW	2.2	0.0	0.0	0.0	
	6.2	Lift motor, output at S3 (on time) 11%		kW	0	3	3	3	
	6.3	Battery as per DIN 43531/35/36 A, B, C, no		no					
	6.4	Battery voltage/nominal capacity K5		V/Ah	24 / 375				
	6.5	Battery weight		kg	300				
	6.6	Energy consumption according to VDI cycle		kWh/h	0	0	0	1.35	
6.6	Energy consumption as per EN 16796		kWh/h	0.67	0.79	0.86	0		
	CO- Equivalent as per EN 16796		kg/h	0.4	0.4	0.5			
Misc.	8.1	Type of drive control		AC speedCONTROL					
	8.4	Sound pressure level at operator's ear as per EN 12053		dB (A)	60	63	63	63	

¹⁾ Diagonal as per VDI: + 204 mm

²⁾ Diagonal as per VDI: + 368 mm

³⁾ Load section lowered: + 54 mm

⁴⁾ Tiller in upright position (crawl speed)

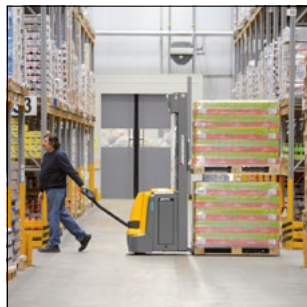
⁵⁾ Values for standard mast 290/280 ZT

⁶⁾ With DZ mast: x - 42 mm; l1 + 42 mm; l2 + 42 mm

Benefit from the advantages



Increased ground clearance for tackling thresholds and ramps



Double-deck mode (optional)

Intelligent control and advanced drive system

Our 3-phase AC technology motors offer you more power and performance while, at the same time, reducing operating costs. The advantages are:

- High efficiency levels with excellent energy management.
- Powerful acceleration.
- Rapid direction change.
- speedCONTROL: Roll-back protection on gradients.
- No carbon brushes: The drive motor is maintenance-free.

Versatile with support arm lift

A second lifting mechanism, the support arm lift, is used to raise the support arms independently of the forks. As a result, the EJC 212z/214z/216z/220z can overcome uneven ground, ramps and loading bridges with ease. The support arm and mast lift operate independently of each other. The advantage: Double-decker transport of two pallets simultaneously is possible (optional).

Safe and comfortable stacking and retrieval

All lifting and lowering functions are conveniently controlled from the multi-functional tiller arm. This allows the operator to concentrate fully on stacking and retrieving. Other safety features that make stacking safe and efficient include:

- Precise, sensitive load lifting by speed controlled and noise-reduced hydraulic motor.

- liftPLUS (optional) enables the EJC 214z/216z to achieve a significantly higher lift speed (up to 400 kg) in comparison with the production version. A benefit for throughput when stacking.
- Gentle depositing of loads using proportional hydraulics.
- Additional reduction of travel speed from lift heights of approx. 1800 mm.
- Four-wheel concept for high stability.

High performance in every situation

The EJC 212z/214z/216z/220z has been designed for intensive operation. Its powerful lift motor (2.2/3 kW) and dynamic 1.6 kW drive motor in 3-phase AC technology ensure high throughput. Other advantages:

- 8 mm thick steel frame.
- Heavy-duty rolled box section forks.
- Torsion-resistant mast with high residual capacities.

Designed for easy servicing

- Slow travel with lowered forks reduces fork wear (optional).
- Service access ports on front apron.
- Support wheel with bayonet mechanism enables wheels to be changed with the truck only slightly raised.

Fully informed at all times

Extensive instruments and setting options allow the operator to monitor the stacker with ease:

- Battery discharge indicator (3-colour LED) with lift cut-out.
- 2-inch display with battery discharge status, number of operating hours, event messages and selection of 3 travel programs (optional).

- Activation of the truck by EasyAccess via softkey, PIN code or optional transponder card.

Long operating times available with lead-acid battery

Large battery capacities for long operating times:

- MX battery compartment: 2 PzS 250 Ah.
- LX battery compartment: 3 PzS 375 Ah.
- Built-in charger (24 V/30 A) for wet cell batteries and maintenance-free batteries for easy charging at any 230-V mains socket (optional).
- Lateral battery exchange.

Additional equipment

- Tandem load rollers.
- Twin roller support wheel to reduce wear.
- Load guard.
- Gentle depositing of the load on the ground.
- Cold store version.
- Connection option e.g. for terminal, scanner or printer.

Lithium-ion technology

- High degree of availability thanks to extremely short charging times.
- No battery exchange required.
- Cost savings due to longer service life and low maintenance compared with lead-acid batteries.
- No charging rooms and ventilation required as there is no build up of gas.
- Longer service life with 5-year Jungheinrich guarantee.

Jungheinrich UK Ltd.

Head Office:
Sherbourne House
Sherbourne Drive
Tilbrook
Milton Keynes MK7 8HX
Telephone 01908 363100
Fax 01908 363180

info@jungheinrich.co.uk
www.jungheinrich.co.uk

The German production facilities in Norderstedt, Moosburg and Landsberg are certified. **ISO 9001**
ISO 14001

Jungheinrich fork lift trucks meet European safety requirements.



JUNGHEINRICH